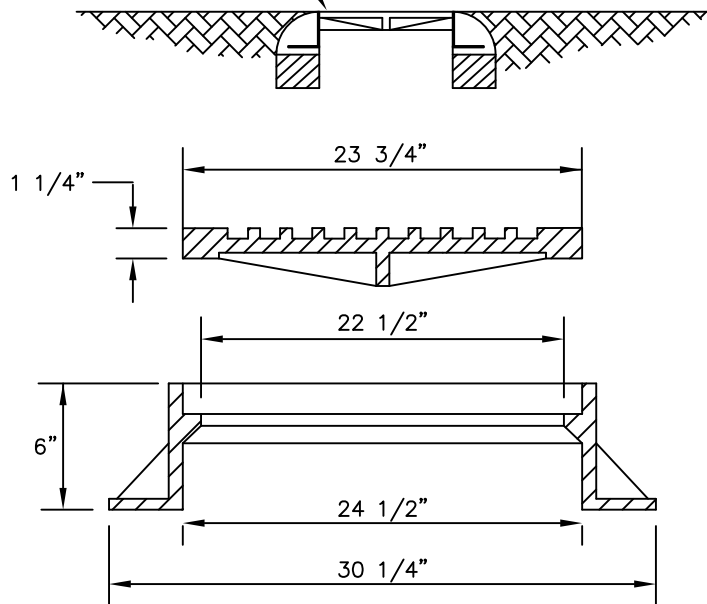


SET COVERS FLUSH WITH  
FINISHED ASPHALT



FRAME AND COVER TO BE TRAFFIC  
BEARING U.S. FOUNDRY #170-E, OR EQUAL.

NOTES:

1. FRAME WEIGHT TO BE 150 LBS.
2. COVER WEIGHT TO BE 130 LBS.
3. COVER TO BE MARKED:

VOLUSIA  
COUNTY  
SANITARY  
SEWER

4. WEIGHTS TO BE STAMPED ON  
FRAME & COVER.
5. FRAME & COVER TO HAVE  
MACHINED SURFACES.

SANITARY MANHOLE  
FRAME AND COVER